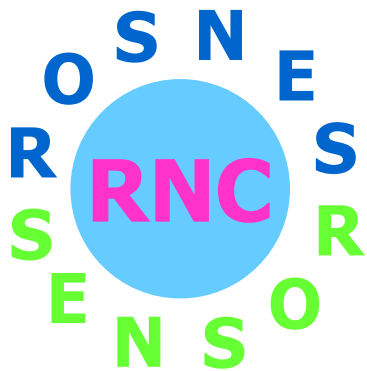
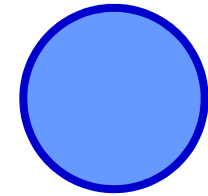


TOF Camera Module



Rosnes Corporation

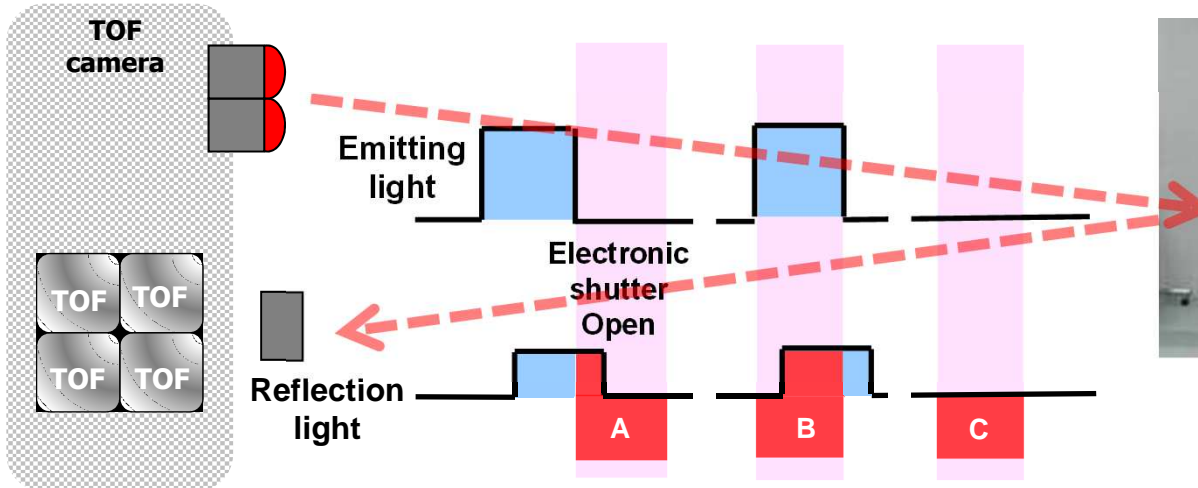
June 11th, 2018





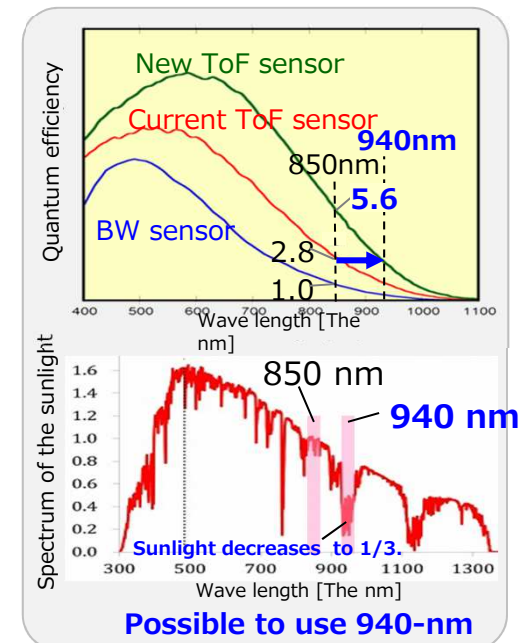
Principle of Time of Flight sensor

Ranging principle of pulse ToF (example)



$$X = \frac{A-C}{(B-C) + (A-C)}$$

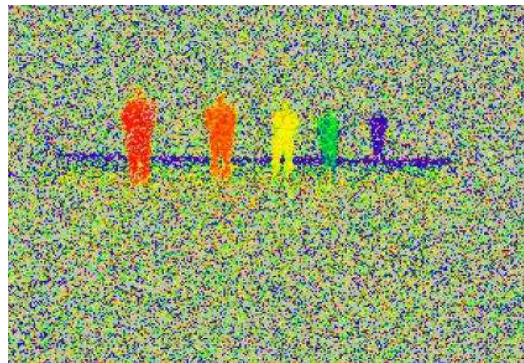
Characteristic of New ToF Sensor



1. IR-Image



2. Distance-Image



Applications of ToF Sensor

Automated Driving



Accident Avoidance Automated Parking



Service Robot

Spatial Recognition



Patient Monitoring

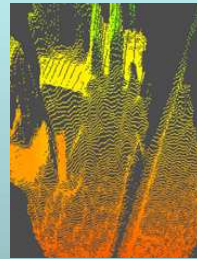


Driver Monitoring

High Definition Image High Precision 3D Data



2D Image



3D Mapping



2D Image



3D Modeling

3D Data

3D Mapping 3D Modeling

Tracking & Counting



Object Recognition



Palletizing



Dimensioning

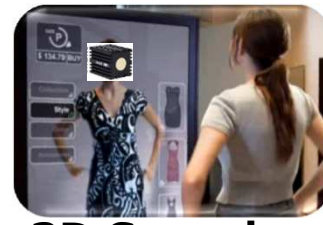


Picking & Placing

Miscellaneous



Warehouse Automation



3D Scanning



Positioning